

Completing the Circle

Strategy for the implementation of
Harrow's Children's Centres

Spring 2007

Contents

The Government's agenda and targets	5
What is a Children's Centre?	7
The strategic approach to the development of the nine centres	8
Extended services implementation structure	9
Achievement so far	11
What is happening next?	13
How do you find out more?	15

Introduction

This document sets out to provide information about:

- The vision for Harrow's children's centres
- Partnership development and joint working arrangements
- Achievement so far
- What is happening next.

Harrow's vision for children's centres

To provide integrated, early identification, intervention and prevention services through multi-agency teams working closer to the child and their families across Harrow.



The Government's
agenda and targets

The Government's agenda and targets

The development of children's centres is Harrow's response to the Government's objectives, set out in the Ten Year Childcare Strategy, to have a children's centre in every community by 2008.

Harrow will have nine children's centres which will:

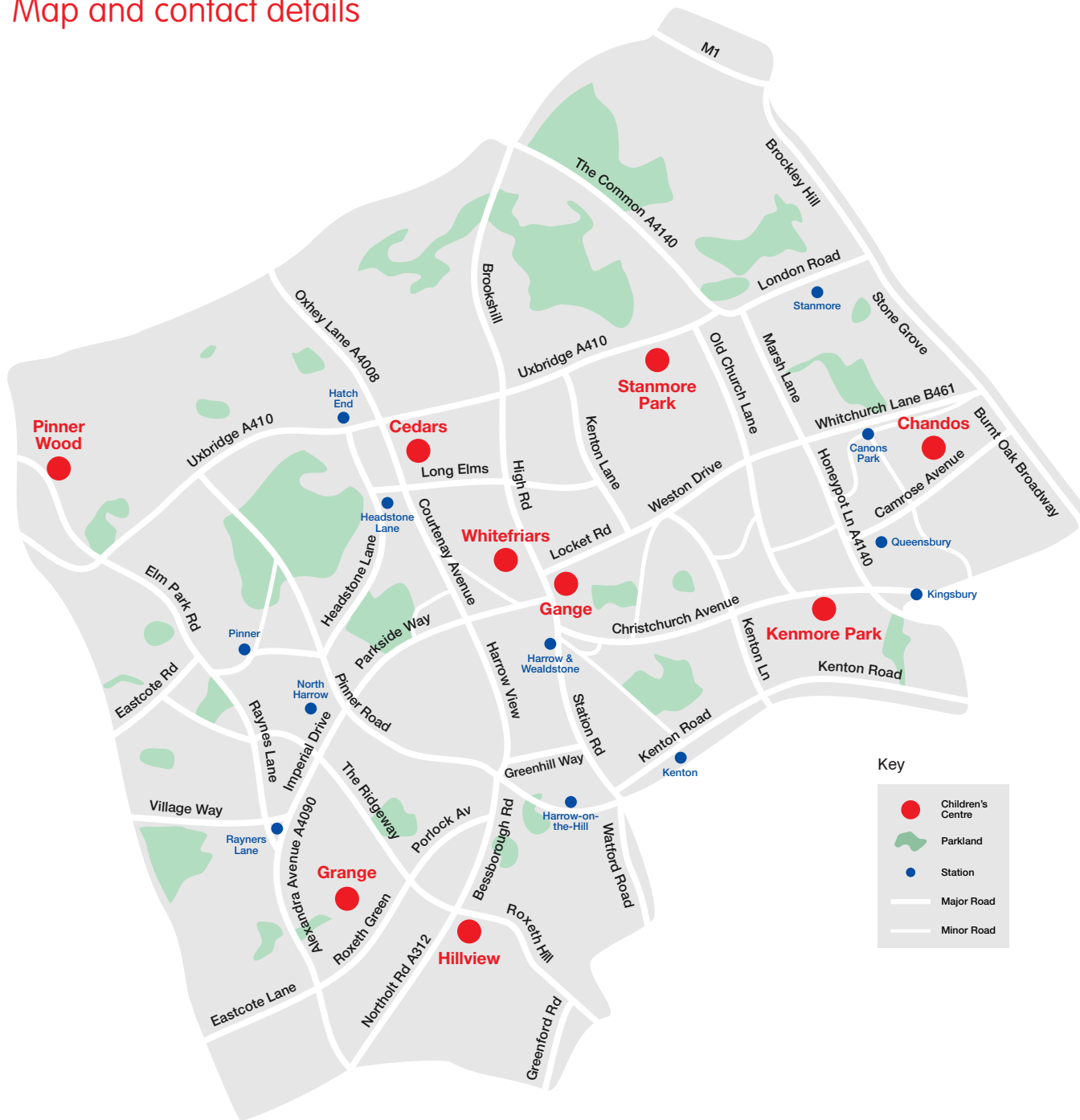
- Provide the best educational start for children
- Support parents / carers in maximising children's potential
- Support diverse communities' own aspirations
- Support parents / carers in reaching their own potential
- Integrate with services provided by extended schools.

Harrow is committed to ensuring that all children aged birth to five and their families have access to a full range of achievement and prevention focused integrated services through the nine children's centres.

The Government has set a target for Harrow's children's centres to reach 7480 children and their families living in the areas of highest deprivation.

Harrow children's centres

Map and contact details



Cedars
Whittlesea Road
Harrow HA3 6LS
020 8428 5845
Buses: H18, H12

Chandos
Chandos Crescent
Edgware HA8 6HL
Buses: 79, 186, 288, 340

Gange
68 Canning Road
Wealdstone HA3 7SN
020 8427 0134
Buses: 186

Grange
Welbeck Road
Harrow HA2 0RJ
020 8422 5054
Buses: H11, H12

Hillview
2 Grange Road
South Harrow
HA2 0LW
020 8422 4692
Buses: H10, 114, 140, 258

Kenmore Park
Moorhouse Road
Harrow HA3 9JA
020 8204 8759
Buses: 114, 79

Pinner Wood
Latimer Gardens
Pinner HA5 3RA
020 8868 2468
Buses: H13

Stanmore Park
William Drive
Stanmore Park
Harrow HA7 4FZ
020 8954 2015
Buses: 142

Whitefriars
Whitefriars Avenue
Harrow HA3 5RQ
020 8427 2080
Buses: 182, 258, 340

www.childrenatthecentre.org.uk

What is a Children's Centre?

A children's centre is a community-based facility providing:

- Integrated childcare and early learning for children
- Outreach and health services for families
- Drop in activity sessions.

It will be:

- Open 48 weeks per year minimum
- Open 5 days per week minimum
- Open 10 hours per day minimum.

The Ten Year Childcare Strategy sets out the Government's aim to have a children's centre in every community.

Harrow will have nine designated children's centres by 2008.

What services could be available at your children's centre?

- Antenatal care
- Childcare for children aged 3-11
- Toy library
- Training and adult learning
- Health visitor support
- Outreach and support for parents/carers e.g. behaviour support routines.

Contact the centres for full details of services available or visit www.childrenatthecentre.org.uk

The strategic approach to the development of the nine centres

Strong partnership working is pivotal to the achievement of designation for all nine centres.

The Harrow Children and Young People's Plan (HCYPP) outlines a vision which supports more integrated and effective services, clearly targeted with improved outcomes for all children and young people growing up in Harrow. Children's centres with extended schools will provide integrated early education and will form a network, which will become the base for multi-agency delivery of services. The centres will provide frontline health and social care services, information, advice and support to parents / carers, children and young people.

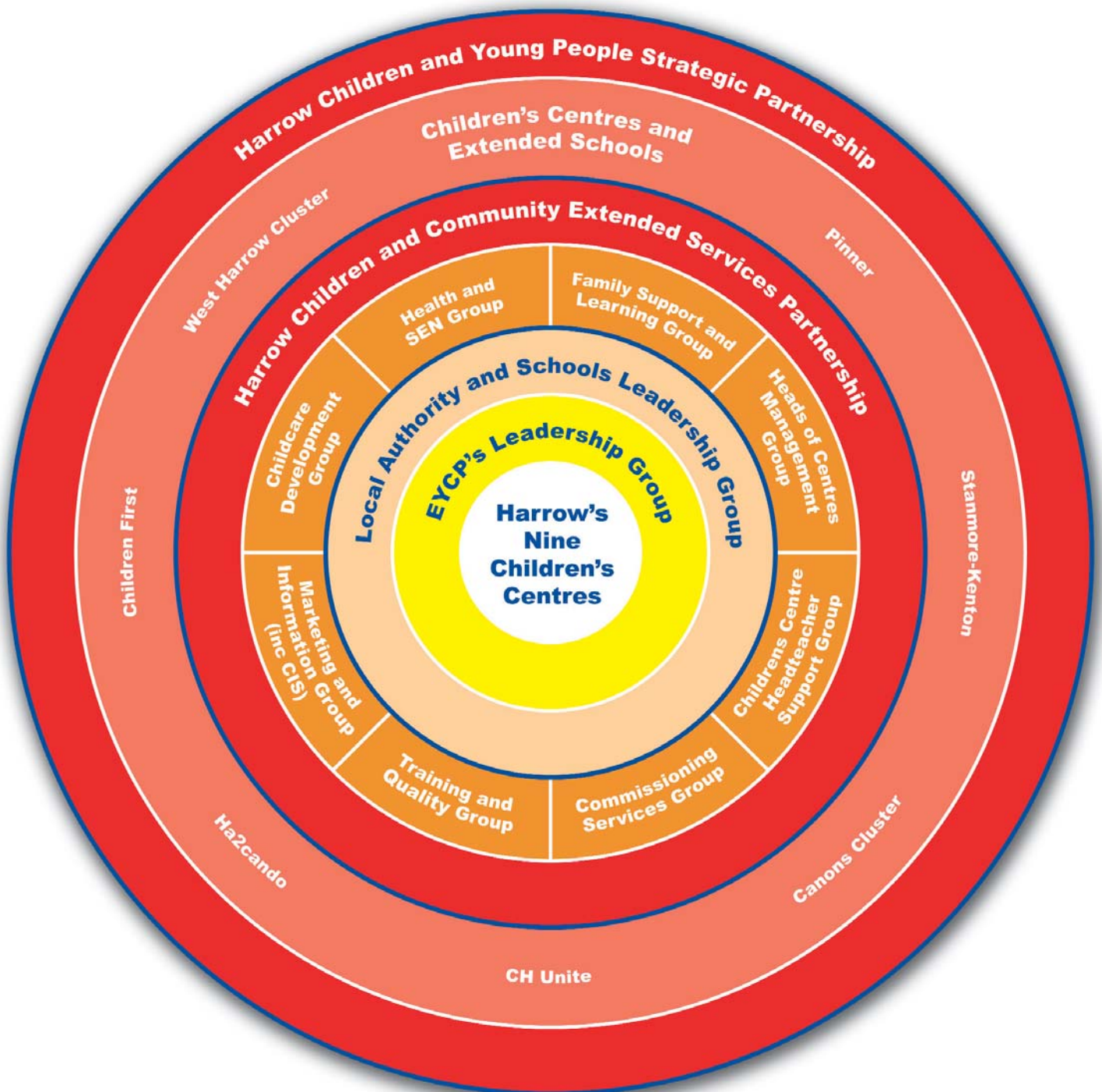
To achieve designated status the centres must demonstrate that they are providing a full range of services in line with government guidance.

They will principally be:

- Quality early education integrated with childcare
- Family support and outreach to parents
- Child and family health services.

Provision of these services will be achieved by partnership working between council services, health services, the voluntary sector and the private sector. During 2006 a strong framework for partnership working has been developed which brings together the strategies for children's centres and extended schools.

Extended services implementation structure



A young girl with long dark hair, wearing a pink sweater and light-colored boots, is sitting on a wooden train track. She is looking up and smiling. The train track is circular and has several toy train cars on it. The background is a dark grey carpet.

Achievement so far

Achievement so far

In 2006 Harrow achieved designation for three centres – Hillview, Gange and Stanmore Park. The designation of Stanmore Park was a whole year ahead of schedule.

Early Years, Childcare and Parenting Services have evolved to provide a framework ensuring that children's centres and extended schools develop cohesively.

Extended Services Partnership Structure has been agreed.

Outreach provision has been achieved through the appointment of a counsellor, outreach workers and social welfare workers.

Key service level agreements which underpin partnership working have been achieved with:

- Oral health
- Citizen's Advice Bureau
- HOPE (Formerly Harrow Family Learning Network)
- Pre-school Learning Alliance
- Ethnic Minority Achievement Service
- Jobcentre Plus.

Leaflets on what these services provide and how they are provided are available from each centre.

A co-ordinator has been appointed for Whitefriars Children's Centre.

Building plans are being developed for the other six centres.

Consultation events have been held with the local community at Pinner Wood, Grange, Kenmore Park and Whitefriars Children's Centres to ensure that appropriate targeted services are provided in each centre.

An effective communication strategy has been drawn up with the creation of the children's centre website www.childrenatthecentre.org.uk and the "catch up" newsletter.

An inter-agency training programme is now in place for staff working in and with the children's centres and extended schools.

All early years and childcare providers are clustered to their local children's centre.

A young child with blonde hair, wearing a red shirt and dark pants, is sitting on a colorful, patterned blanket on a grassy area. The child is smiling and looking towards the camera. The blanket features various cartoonish animal patterns. Surrounding the child are several stuffed animals: a large white bear, a brown bear, a grey and white bear, and a yellow bear wearing a red shirt. A metal pot and a blue bowl are also on the blanket. The scene is set outdoors on a grassy field.

What is happening next?

What is happening next?

To achieve designation for the remaining six centres we need to have:

- Agreed building plans in place for Kenmore Park, Cedars, Grange and Pinner Wood Children's Centres
- Building works on Whitefriars and Chandos Children's Centres completed
- Service delivery plans agreed with the Health Service
- Further service level agreements with partner organisations agreed
- Management provision agreed for Grange, Kenmore Park, Cedars and Pinner Wood Children's Centres.

The quality of service provision is of paramount importance. A "What is a Good Children's Centre?" model will be produced to support the monitoring and evaluation of quality.

The centres' objective of providing services to the 7480 most vulnerable children aged from birth to five will be monitored through the installation of a new I.T. system.

A touch screen kiosk will be installed in each centre which parents can use to access a range of information.

Further consultation events with communities local to Cedars and Chandos will take place.

Further consultation with school clusters will take place to ensure that the children's centres complement and enhance the work of local schools.

Work to enhance the Equality and Diversity Impact Assessment will be undertaken with colleagues in the Ethnic Minority Achievement Service (EMAS) and relevant community organisations.

Work to analyse the gaps and decide on the framework for commissioning services will continue in line with DfES guidelines.



How to find out more?

How to find out more?

Contact:

Strategic Lead Officer	Wendy Beeton	020 8861 2583
Service Provision	Hilary O'Byrne	020 8736 6838
	Angie Hicks	020 8861 3865
	Anne-Marie McCarthy	020 8736 6856
Communications	Jean Thorbes	020 8861 3865
Finance	Nahad Choudhury	020 8861 3865
	Paul Readman	020 8861 2583

Designated Centres

Gange Children's Centre Manager	Sharon Craig	020 8427 0134
Hillview Children's Centre Manager	Kathy Paine	020 8422 4692
Stanmore Park Children Centre Manager	Kim Eldridge	020 8954 2015

Developing Centres

Whitefriars Children's Centre	Una Cloherty	020 8427 2080
Kenmore Park	Hilary O'Byrne	020 8736 6838
Grange	Hilary O'Byrne	020 8736 6838
Cedars	Wendy Beeton	020 8861 2583
Pinner Wood	Wendy Beeton	020 8861 2583
Chandos	Wendy Beeton or	020 8736 6838
	Hilary O'Byrne	020 8861 2583

Or visit www.childrenatthecentre.org.uk

Harrow Children's Centres

For more information visit
www.childrenatthecentre.org.uk



SureStart

